



Acie provides excellent lighting with good modelling and comfortable visual conditions. It comes with air slots along the luminaire for air-handling purposes and double parabolic louvre to fulfil specification. Ideally suited to general office application and retail areas where a quality appearance is particularly appropriate.

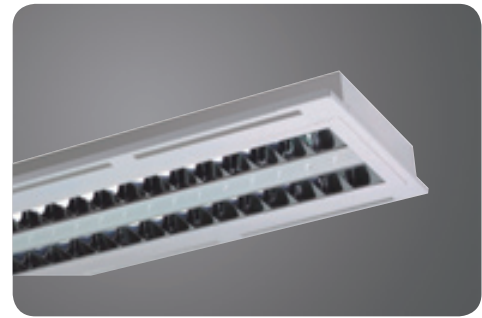
Features include:

Housing made of 0.5mm high quality cold rolled sheet steel coated with white epoxy powder finishing.

Anodized aluminium louvre available in either specular or matt finishing.

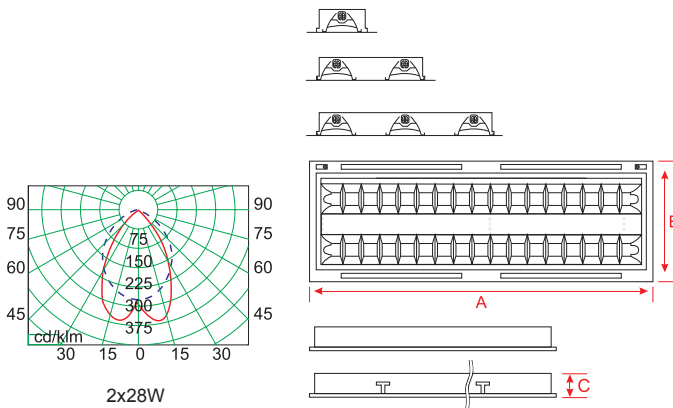
Flexible wiring with heat resistant to 105°C

Fitting is available with HF Electronic Ballast; Dimmable Ballast or Emergency Power Pack.



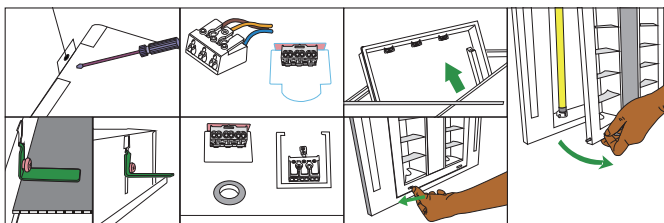
FLUORESCENT LIGHTING
RECESSED

ACIE



| ART NO | LAMP | LAMP | DIMENSIONS | | |
|---------|---------------|--------|------------|--------|--------|
| | POWER | HOLDER | A (mm) | B (mm) | C (mm) |
| ACIE314 | 3x14W/24W FDH | G5 | 595 | 595 | 60 |
| ACIE414 | 4x14W/24W FDH | G5 | 595 | 595 | 60 |
| ACIE228 | 2x28W/54W FDH | G5 | 1195 | 390 | 60 |
| ACIE328 | 3x28W/54W FDH | G5 | 1195 | 595 | 60 |
| ACIE235 | 2x35W/49W FDH | G5 | 1495 | 390 | 60 |
| ACIE335 | 3x35W/49W FDH | G5 | 1495 | 595 | 60 |

Note: Subjected to +/-1.5mm
Specification subject to changes without prior notice



Ordering guide: ACIE314## ()
High Frequency Electronic Ballast: HF
High Frequency Dimmable Ballast: D
Emergency Power Pack: PP

Louvre options: Specular(S)
Matt(M)