



Luce linear fixture is designed with ultra slim body and diffuser to provide uniform glare-free illumination. Ideally for general lighting application, cabinet lightings, mirror lightings and etc.

Features include:

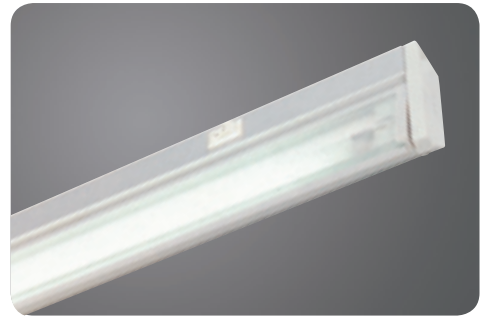
Housing made of high purity extruded aluminium coated with epoxy powder finishing.

Toughened matt glass diffuser.

Incorporated with on/off switch.

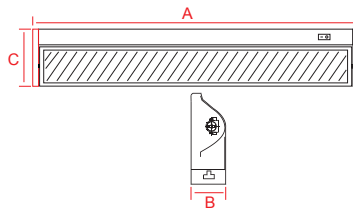
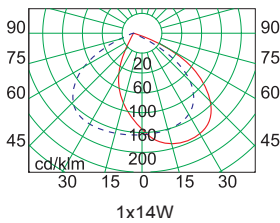
Flexible wiring with heat resistant to 105°C.

Fitting is available with either HF Electronic Ballast; Dimmable Ballast.



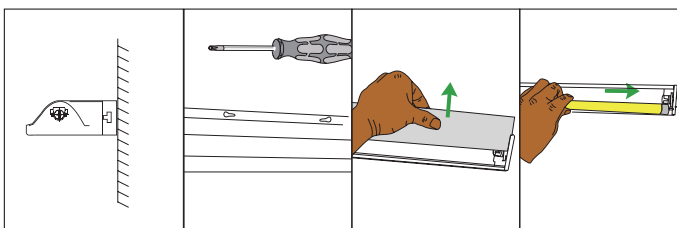
FLUORESCENT FITTING  
SURFACE

LUCE



ART NO	LAMP		DIMENSIONS		
	POWER	HOLDER	A (mm)	B (mm)	C (mm)
LUCE18	1X8W FDH	G5	350	90	40
LUCE114	1X14W FDH	G5	610	90	40
LUCE121	1X21W FDH	G5	910	90	40
LUCE128	1X28W FDH	G5	1210	90	40
LUCE135	1X35W FDH	G5	1510	90	40

Note: Subjected to +/-1.5mm  
Specification subject to changes without prior notice



Gear ordering guide: Luce115##  
High Frequency Electronic Ballast: HF  
High Frequency Dimmable Ballast: D